

PM460 Hammer union pressure transducer for oil fields

**MAIN FEATURES**

- Pressure sensor for cement slurry
- Strong anti-overload capability
- Anti-violent vibration, strong impact, corrosion-resistant all stainless steel structure, long life material, resistant to harsh environments



**OVERVIEW**

PM460 transmitter is made of high-strength, high-elasticity, corrosion-resistant stainless steel. It is a high-reliability, corrosion-resistant, high-long-term stability product specially designed for oil pressure testing of oil wells such as cobalt wells, cementing and fracturing vehicles.

The special structural design and strain isolation technology minimize the zero temperature drift of the transmitter due to the installation stress, and its long-term stability is also greatly improved. The pressure sensitive diaphragm and WECO 1502, 2 inch spherical interface are integrated into one body, and the other components are processed by electron beam welding. The aspect ratio of the weld is unmatched by other welding processes. The whole instrument is integrated to ensure the hammer installation process. And high-intensity vibration during use and reliability under impact.

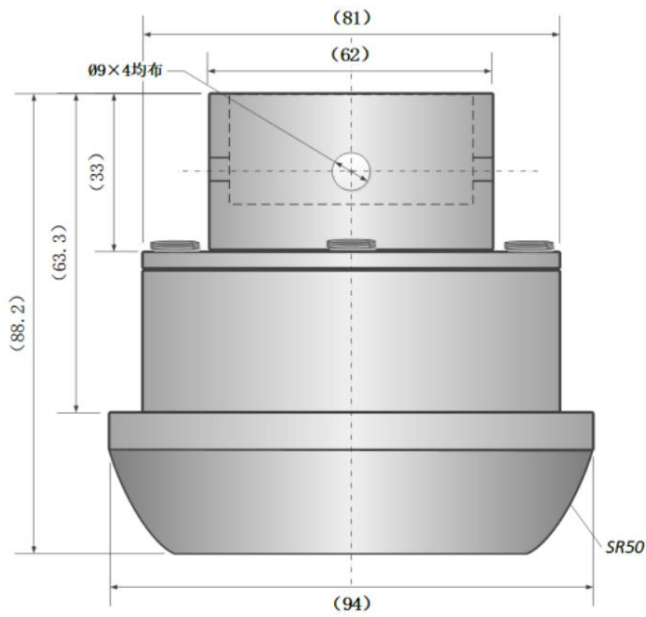
Components that come into contact with the pressure medium have excellent resistance to mechanical wear and corrosion from corrosive media such as H2S. The thick and shallow structure of the inner bore is effective to prevent blockage of the slurry and facilitate maintenance.

**SPECIFICATION**

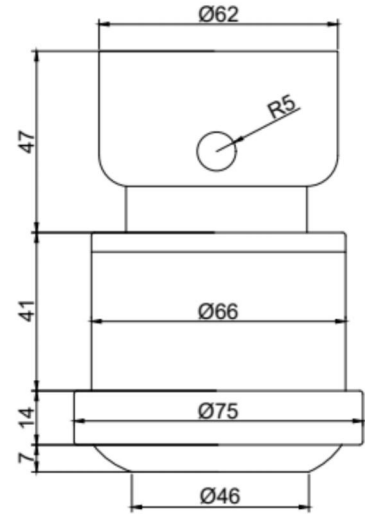
Items	Parameter
Media to be measured	wet soil, crude oil, corrosive liquids and gases
Pressure type	absolute pressure, sealed reference pressure, vent pressure
Range	0~35MPa, 70MPa, 105MPa, 140MPa, 210MPa, 315MPa
Power supply	9-30VDC
Output signal	4-20mA, 0-5VDC, 1-5VDC, 0-10VDC, 3mV/V
Nonlinear	0.04% FS
Repeatability	0.04% FS
Accuracy	0.1% FS, 0.2% FS, 0.5% FS
Long-term stability	0.1% FS / year (typical)
Working temperature	-43~85°C/125°C
Compensation temperature	-25 ~ 70 ° C / 100 ° C
Response time	≤ 1 millisecond (typical)
Insulation resistance	≥500MΩ/100V
Overload pressure	200% FS (2 times full scale, special: 5 times full scale)
Destruction pressure	500% FS (5 times full scale, special 10 times full scale)
Vibration resistance	about 10g/0~2000HZ
Impact resistance	about 50g/1ms
Connection method	Chuck seal or specified
Wetted material	17-4PH stainless steel
Relative humidity	0~100%RH
Protection rating	IP67
Electrical output lead	aerospace connector, Amphenol

TYPICAL DIMENSION

Unit: mm

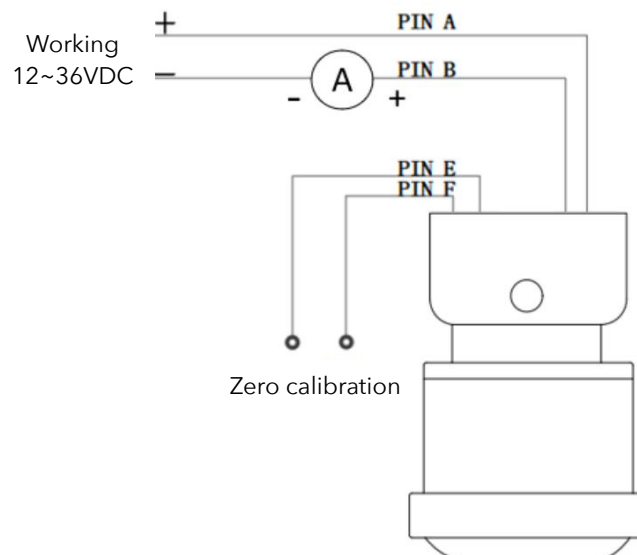


461 type



462 type

ELECTRIC CONNECTION



Wiring example for 4-20mA signal output

**ORDER CODE**

<b>Code:</b>	A	-	B	-	C	-	D	-	E	-	F	-	G	-	H
<b>Model:</b>	PM461	-	S	-	0-70	-	S	-	S17	-	CS	-	MA	-	AC

Model	Code A
1502 type	461
2002 type	462
Pressure type	Code B
Sealed reference pressure	S
Absolute pressure	A
Vent pressure	V
Pressure Range(X=specific range)	Code C
0~35MPa、70MPa、105MPa、140MPa、210MPa、315MPa	X MPa
Accuracy	Code D
0.1%	C
0.2%	T
0.5%	S
Interface material	Code E
17-4PH stainless steel	S17
Other customized	C

Process connection	Code F
Chuck seal	CS
Customized	C
Output signal	Code G
4~20mA	MA
0~10V	V1
0-5VDC	V2
1-5VDC	V3
3mV/V	3MV
More output customized	C
Electric connection	Code H
Amphenol C16-1	AC
Customized	C

**Remarks:**

It is equipped with a plug and 1m polyurethane towline cable at the factory. The cable size is 2\*0.35mm<sup>2</sup> and the cable outer diameter is 6mm.