

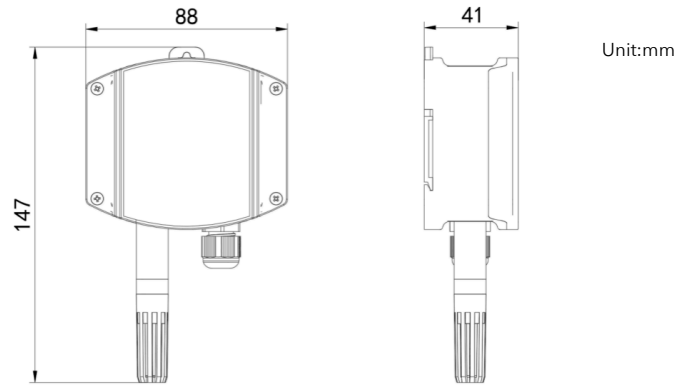
SEM286 Industrial wall-mounted temperature and humidity sensor
MAIN FEATURES

- Adopt high-precision temperature and humidity measurement unit, good long-term stability and small drift
- 10~30V wide voltage range power supply
- Easy to install, can be wall mounted or rail mounted
- High dust protection level (IP65)
- Adopt standard industrial interface 4~20mA/0~10V/0~5V analog signal output, RS485 standard ModBus-RTU communication protocol

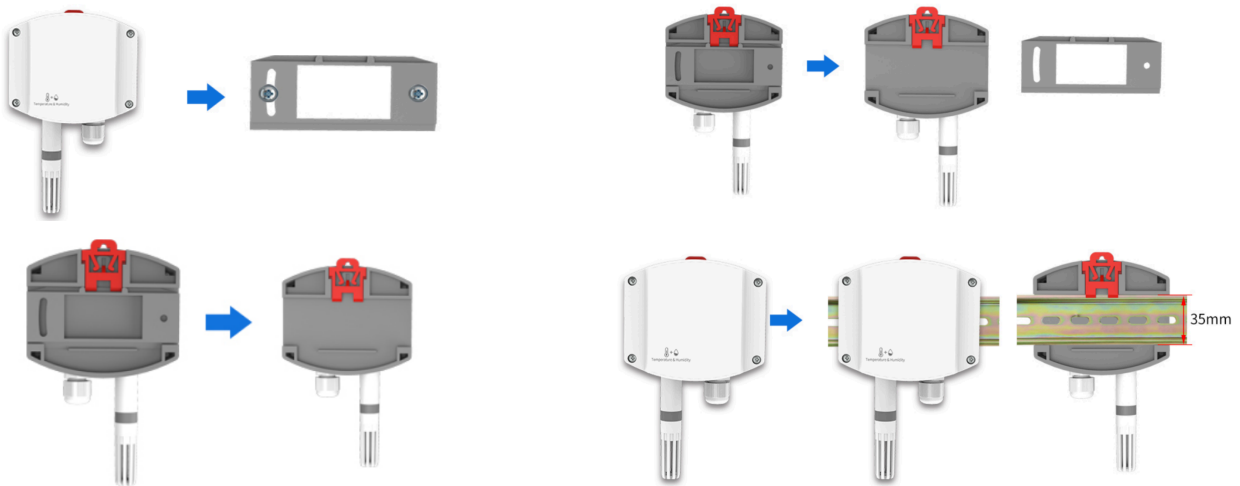

SPECIFICATION

Items	Parameter	
DC power supply (default)	10~30V DC	
Maximum power consumption	0.4W (RS485 type), 1.2W (analog type)	
Precision A	humidity	±2% RH (5% RH~95% RH, 25°C)
	temperature	±0.4°C (25°C)
Precision B (default)	humidity	±3% RH (5% RH~95% RH, 25°C)
	temperature	±0.5°C (25°C)
Long-term stability	humidity	≤1%RH/y
	temperature	≤0.1°C/y
Response time	humidity	≤4s (1m/s wind speed)
	temperature	≤25s (1m/s wind speed)
Probe operating temperature	-40°C~+120°C, default -40°C~+80°C	
Probe operating humidity	0%RH-100%RH	
Signal output	4~20mA, 0~5V, 0~10V, RS485 output	
Communication protocol	Modbus-RTU communication protocol (Default)	
Temperature display resolution	0.1 °C	
Humidity display resolution	0.1% RH	
Temperature and humidity refresh time	1S	
Transmitter circuit operating temperature and humidity	-40°C~+60°C, 0%RH~80%RH	
Hole Size	70mm	
Load capacity	Voltage: load capacity output resistance ≤250Ω, current: ≤600Ω	

DIMENSIONS



INSTALLATION



Wall mount example

Slide rail installation

ORDER CODE

Code:	A	-	B	-	C
SEM	286	-	R	-	1

Model	Code A
Temperature and humidity sensor	286
Signal output	Code B
RS485 (Modbus-RTU protocol)	R
4~20mA	A
0~5V	V1
0~10V	V2

Probe type	Code C
Built-in probe	1
External probe	2
External probe with cable	3