

# SPC660 Capacitive liquid level switch



SLS280 - TS debugging instrument

order number: SKTCLS13357

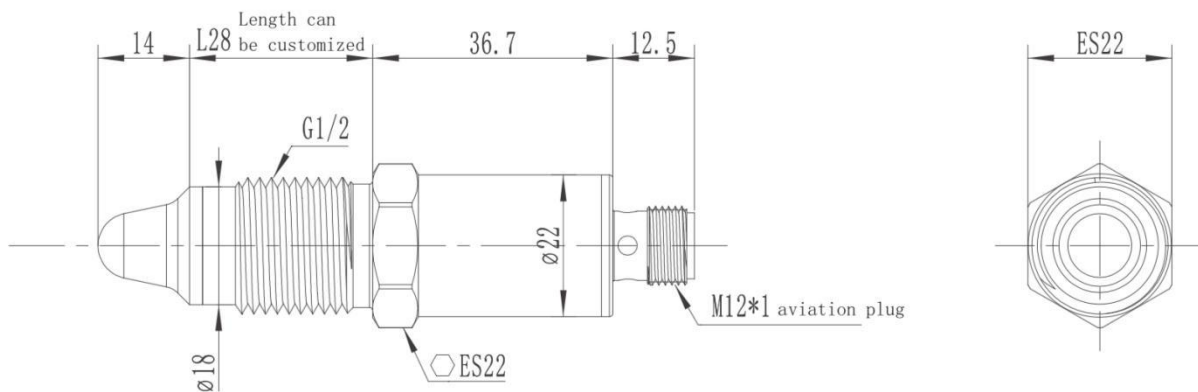
### Product features

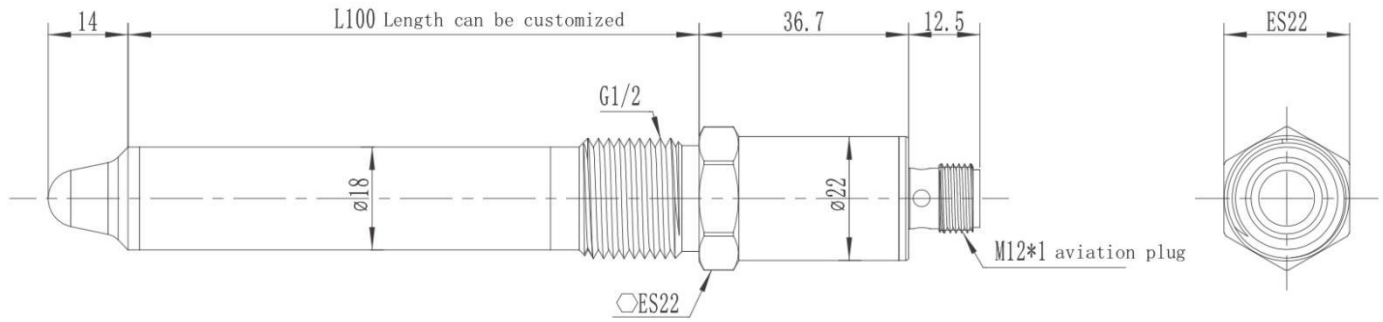
- Intelligent frequency sweep technology is used to detect point and object position
- Reliable detection of various media
- Support various process connections
- Suitable for health industry and industrial applications
- Certified by Ship, ATEX, WHG and cULus
- Medium temperature up to 200 ° C

### Technical parameters

- ◇ Measurement principle: liquid level switch (frequency scanning)
- ◇ Medium characteristics: DC > 1.5
- ◇ Lag: ±1 mm
- ◇ Repeat accuracy: ±1 mm
- ◇ Response time: 0.1s, TYP. 0.2 s, Max.
- ◇ Damping time: 0... 10s, adjustable
- ◇ Liquid receiving parts material: PEEK Natura 316I (1.4404)
- ◇ Surface roughness of the receiving parts: Ra ≤ 0.8 μm
- ◇ Output type: PNP/NPN
- ◇ Switch logic: NORMALLY closed (NC) / normally open (NO)
- ◇ EMC Electromagnetic radiation: EN61326, installed in a sealed metal canister
- ◇ EMC Electromagnetic immunity: EN61326, installed in an airtight metal can

### Size chart (mm)





Optional accessories – electrical accessories

name	Outline drawing/dimension drawing (mm)	material	model	M12* 1-4pin /5Pin self-connector /size drawing (mm)	model
M12*1-5Pin (2m cable)		PUR	ZL05-PU02G		GL04 (4 Pin joint)
M12*1-5Pin (5m cable)			ZL05-PU05G		GL05 (5 Pin joint)
M12*1-5Pin (10m cable)		PVC	ZL05-PC02G		GL05 (5 Pin joint)
M12*1-5Pin (2m cable)			ZL05-PC05G		WL04 (4 Pin joint)
M12*1-5Pin (5m cable)		PUR	ZL05-PU02W		WL04 (4 Pin joint)
M12*1-5Pin (10m cable)			ZL05-PU05W		WL05 (5 Pin joint)
M12*1-5Pin (10m cable)		PVC	ZL05-PC02W		WL05 (5 Pin joint)
M12*1-5Pin (10m cable)			ZL05-PC05W		
M12*1-5Pin (10m cable)		PVC	ZL05-PC010G		
M12*1-5Pin (10m cable)			ZL05-PC010W		

name	Outline drawing/Dimension drawing (unit : mm)	order number
Sanitary chuck installation accessories		KTYLLC13868
Welding the base		KTYLLC13867