

WS3056 Ultrasonic Wind Speed And Direction Sensor



MAIN FEATURES

- Maintenance free, long service life
- No moving parts, no wear
- Engineering plastic shell, lighter
- Adopt ultrasonic probe reflection type, with more compact structure
- Adopt acoustic wave phase compensation technology, with higher accuracy



OVERVIEW

WS3056 anemometer is a meteorological instrument that uses the time difference between ultrasonic waves traveling through the air to measure wind speed and direction. It utilizes acoustic phase compensation technology for enhanced accuracy. Its reflective ultrasonic probe, housed in an ASA engineering plastic housing, offers a compact design. With no moving parts, it is maintenance-free and boasts a long service life.

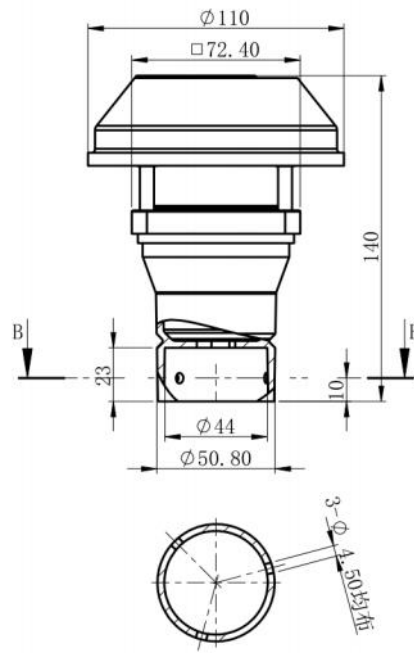
It is primarily used in home weather stations, agricultural weather monitoring, smart city monitoring, and environmental weather monitoring.

SPECIFICATION

Wind speed	Range	0 - 70m/s or customized
	Accuracy	±3%
	Resolution	0.1m/s
Wing direction	Measure Range	0-359°
	Accuracy	±3°
	Resolution	1°
Digital output	Interface	RS232/RS485/SDI-12/4-20mA
	Baud rate	4800~ 19200bps
	Protocol	ModBus RTU or NMEA-0183 or SDI-12
Threshold of wind speed	0.01m/s	
Protection grade	IP65	
Operating environment	-40°C ~ +70°C, 0-100%RH	
Storage Temp.	-50°C ~ +80°C	
Power supply	DC 5~30V DC	
Consumption	20mA @5V	
Size/Weight	Φ110×140mm / 0.2kg	
Body material	ASA engineering plastic	
Warranty	24 months; Mean Time Before Failure: 10 years	

DIMENSION

UNIT: MM



APPLICATION

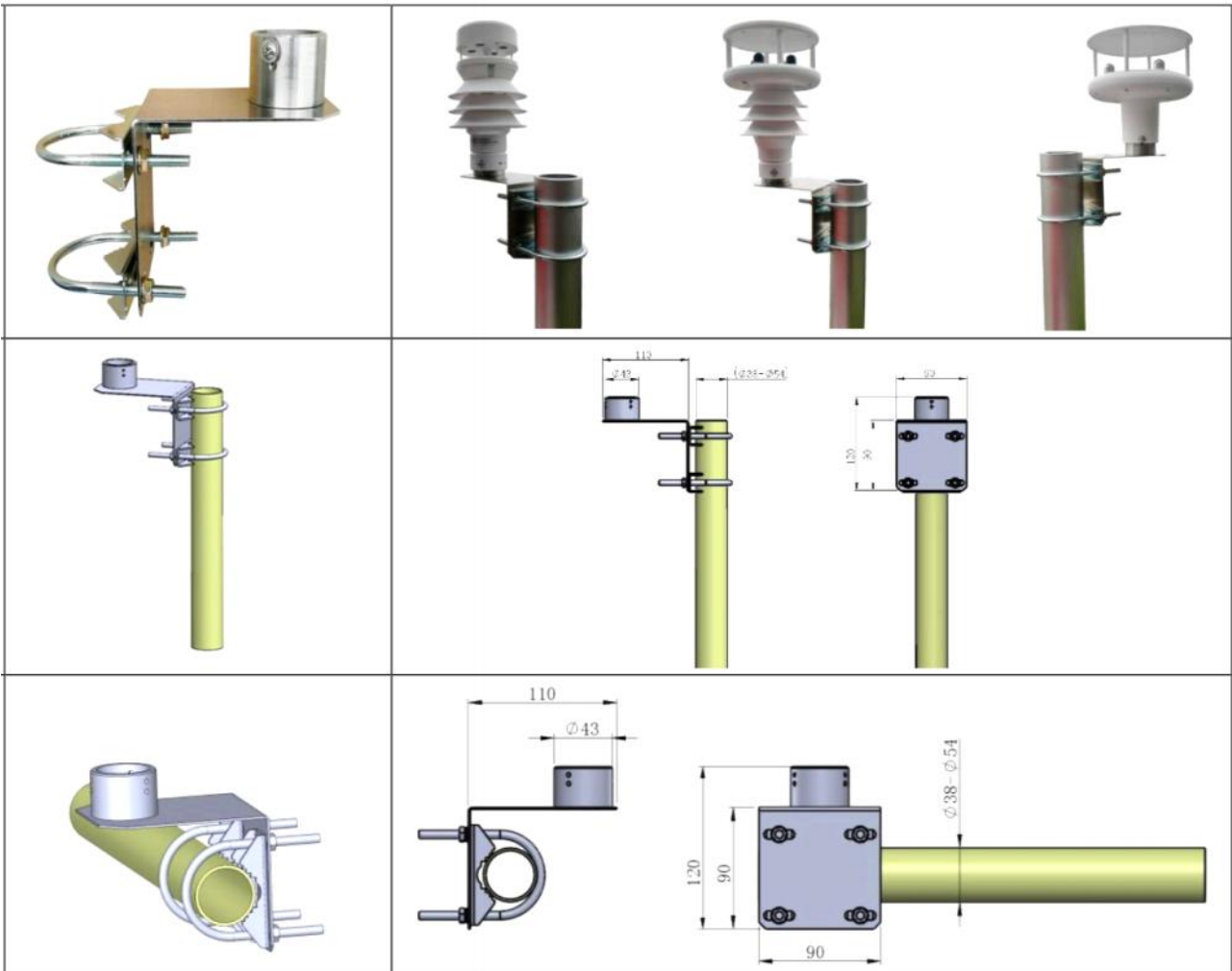


ORDER CODE

WS3056	Ultrasonic Wind Speed & Direction Sensor			
	CODE	Function type		
	A	Wind speed + wind direction		
		CODE	Signal output	
		1	RS232	
		2	RS485	
	3	SDI-12		
WS3056	A	1	Order example	

INSTALLATION

L type installation



I type installation



Appendix

Version	Modify records
V1.0	Document creation