

PM300 Industrial digital pressure transmitter
MAIN FEATURES

- High accuracy: standard calibration range accuracy: $\pm 0.5\%$ FS, excellent overvoltage performance in small ranges.
- Excellent overvoltage protection: 0~70KPa overpressure can reach 3 times, 100~16000Kpa for 2 times, 16MPa~100Mpa for 1.5 times.
- Excellent temperature drift 35kPa: $\pm 2\%$ FS (0°C~60°C), Others: $\pm 1.5\%$ FS (-20°C~85°C)
- 5-digit LCD pressure display, easy to adjust the range
- Wide measuring range and can measure absolute pressure, gauge pressure and sealing pressure.


OVERVIEW

PM300 pressure transmitter adopts imported sensor pressure sensitive components, uses computer laser resistance adjustment for temperature compensation, and adopts an integrated junction box design. The internal special integrated circuit converts the sensor millivolt signal into a standard current signal, which can be directly connected to a computer interface card, control instrument, smart instrument or PLC, etc. The current output method can be used for long-distance transmission. All stainless steel sealed structure, special wiring terminals and digital display, easy to install, check and maintain.

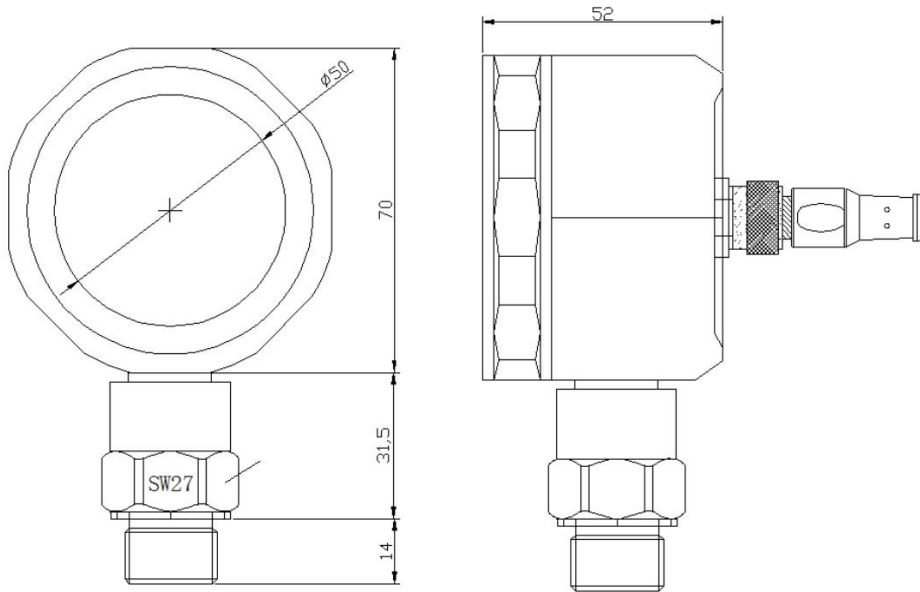
This series of products is suitable for various enterprises and institutions such as petroleum, water conservancy, chemical industry, metallurgy, electric power, light industry, scientific research, environmental protection, etc. It can measure fluid pressure and is suitable for all-weather environments and various corrosive fluids in various occasions.

SPECIFICATION

Items	Parameter
Range	-100kPa...0~20kPa...100MPa
Overload capability	150%FS~300%FS
Pressure Type	G (gauge pressure), A (absolute pressure), S (sealed gauge pressure)
Accuracy	0.1% (custom), 0.25% (typical), 0.5% (maximum)
Long-term stability	$\pm 0.2\%$ FS/year
Zero point temperature drift	$\pm 1.5\%$ FS(@-20°C~85°C)
Sensitivity temperature drift	$\pm 1.5\%$ FS(@-20°C~85°C)
Compensation temperature	0°C~50°C(≤ 100 kPa), -10°C~70°C(typical)
Temperature range	Working temp.: -20°C~85°C; Storage temp.: -40°C~125°C
Power supply	15~ 30V (Default 24V)
Live display	5-digit LCD display: -19999~99999
Output Signal	4~20mA with display (12~36V) ; 1~5V, 0~5V, 0.5~4.5V, 0~10V (12~32V),RS485
Mechanical vibration	20g(20~5000Hz)
Insulation	100M Ω /250VDC
Response time	≤ 1 ms(rising to 90%FS)
Protection level	IP65
Media compatible	Various media compatible with 316L stainless steel

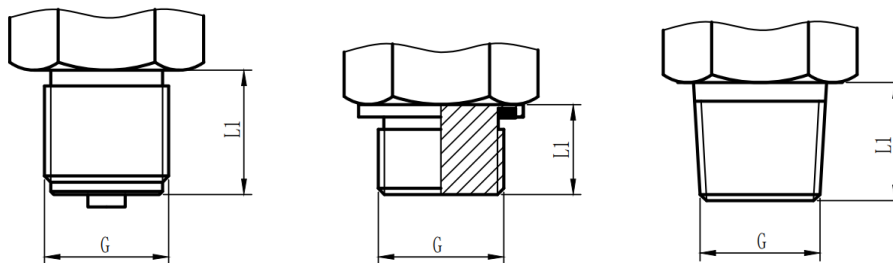
DIMENSION

Unit: mm



PROCESS CONNECTION

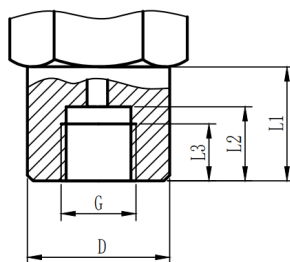
Unit: mm



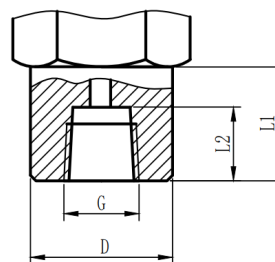
G	L1
G1/4 B EN 837	13
G1/2 B EN 837	20
M20*1.5	20

G	L1
G1/4 A DIN 3852-E	14
G1/4 A DIN 3852-E	17
M14*1.5	14

G	L1
1/8 NPT ANSI/ASME	10
1/4 NPT ANSI/ASME	13
1/2 NPT ANSI/ASME	19



G	L1	L2	L3	D1
G1/4 B EN 837	20	13	10	25



G	L1	L2	D1
1/4NPT	20	13	25

ORDER CODE

Code:	A	-	B	-	C	-	D	-	E	-	F	-	G
Model:	PM300	-	G	-	0-50bar	-	S	-	L	-	G 1/2	-	MA

Model	Code A
Standard process connection	301
Flat membrane for hygiene requirements	302
High medium temperature -40 °C~150 °C	303
Clamp joints type	304
Pressure type	Code B
Gauge pressure	G
Absolute pressure	A
Sealed gauge pressure	S
Pressure Range(X=specific range)	Code C
-0.1MPa ~100MPa	X MPa
-1Bar ~1000Bar	X Bar
-15psi ~15000psi	X psi
Accuracy	Code D
0.1% (custom)	C
0.25%(typical)	T
0.5%(standard)	S
Interface material	Code E
316L	L
Other customized	C

Process connection	Code F
M22*1.5	M22
G1/2	G1/2
M20*1.5	M20
G3/8	G3/8
G1/4	G1/4
G1/8	G1/8
1/2NPT	1/2NPT
1/2PT	1/2PT
3/8PT	3/8PT
3/8NPT	3/8NPT
1/4NPT	1/4NPT
1/4PT	1/4PT
1/8NPT	1/8NPT
Other customized	C
Output signal	Code G
4mA~20mA	MA
0-5V	5V
0-10V	10V
RS485	RS
More customized	C

Precautions:

- Do not touch the diaphragm with hard objects, as this may cause damage to the isolation diaphragm.
- Please read the product instruction manual carefully and check the relevant product information before installation.
- Wiring strictly according to the wiring method, otherwise it will cause product damage and other potential failures. Improper use may lead to danger and personal injury.

For more information, please click <https://www.cdsentec.com>